

The Impact of Negative Social Contexts on Low-Income Single Mother's Aggressive Parenting Practice

Saijun Zhang, Ph.D. Candidate

School of Social Work

University of Illinois at Urbana-Champaign

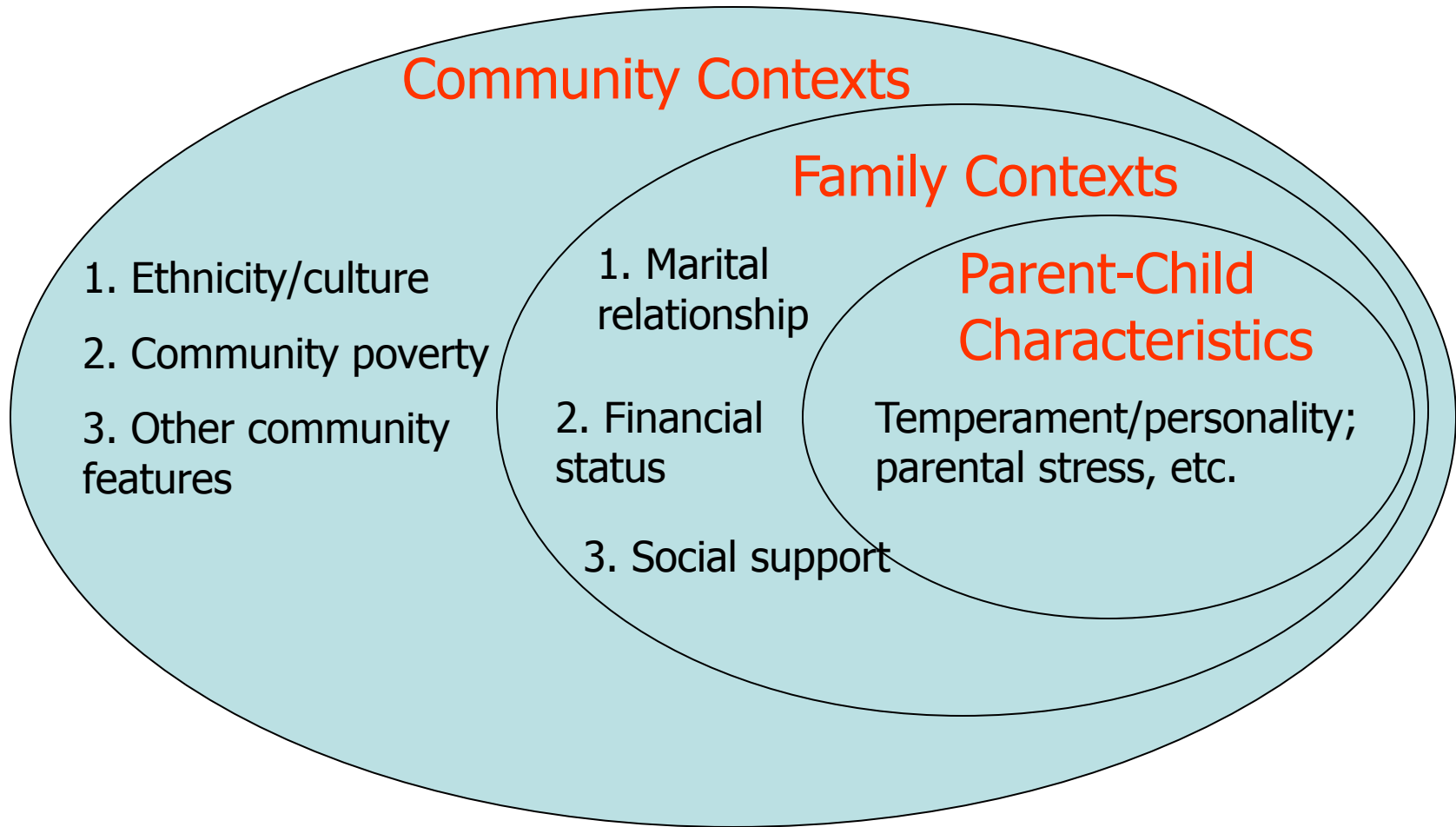
13th Annual Conference of Society for Social Work and
Research, New Orleans, LA, January 16-18, 2009

Importance of Parenting Practice

- Parenting practice affects children's social competence, academic achievement, psychological development, and behavioral problems.
- Punitive and physically aggressive parenting predict children's disruptive, aggressive and oppositional behaviors
- Such behaviors are often associated with negative mental health outcomes in children's future life (Stormshak, et al., 2000)

Factors Affecting Parenting

- Three dimensions of factors affecting parenting (Kotchick & Forehand, 2002):



Existing Research in Parenting Behaviors

- Selected factors affecting parenting have been examined sufficiently:
 - Child-parent characteristics
 - Family contexts
- Very limited studies have been done on factors regarding social contexts, except:
 - Community poverty
 - Ethnicity/culture

Importance of Understanding Violence Exposure on Parenting

- Increased violence exposure on children's well-being has been a research concern
- Numerous studies have indicated the influence of children's exposure to violence on their behaviors
- However, very few studies have examined violence exposure on parenting behaviors
 - Focus on school-aged children
 - Use qualitative methods

Knowledge Gap and Research Question

- Few studies have examined the impact of single mother's violence exposure on their parenting of preschool children
- Research question and hypothesis
 - Does intensity of violence exposure affect low-income single mother's aggressive parenting styles with their pre-school children?
 - Hypothesis: positive relationship between violence exposure and aggressive parenting

Data and Sample

- Data: Fragile Families and Child Well-Being wave 3 and Three-Year In-Home Longitudinal Study of Pre-School Aged Children
- Sample
 - Low income single mothers (N=352)
 - Low-income: $\leq 200\%$ of Federal Poverty Line
 - Single mothers: without the presence of a partner or a parent
 - Children: preschool

Analysis Methods

- Descriptive analyses
- Multivariate analyses – Ordinal Logistic Regression model
 - Allows a dependent variable with three and more ordered categories
 - Models relationships between these ordered categories
 - Has different intercepts for each model equation, but has same parameter estimates for all model equations
 - Should meet the parallel regression assumption

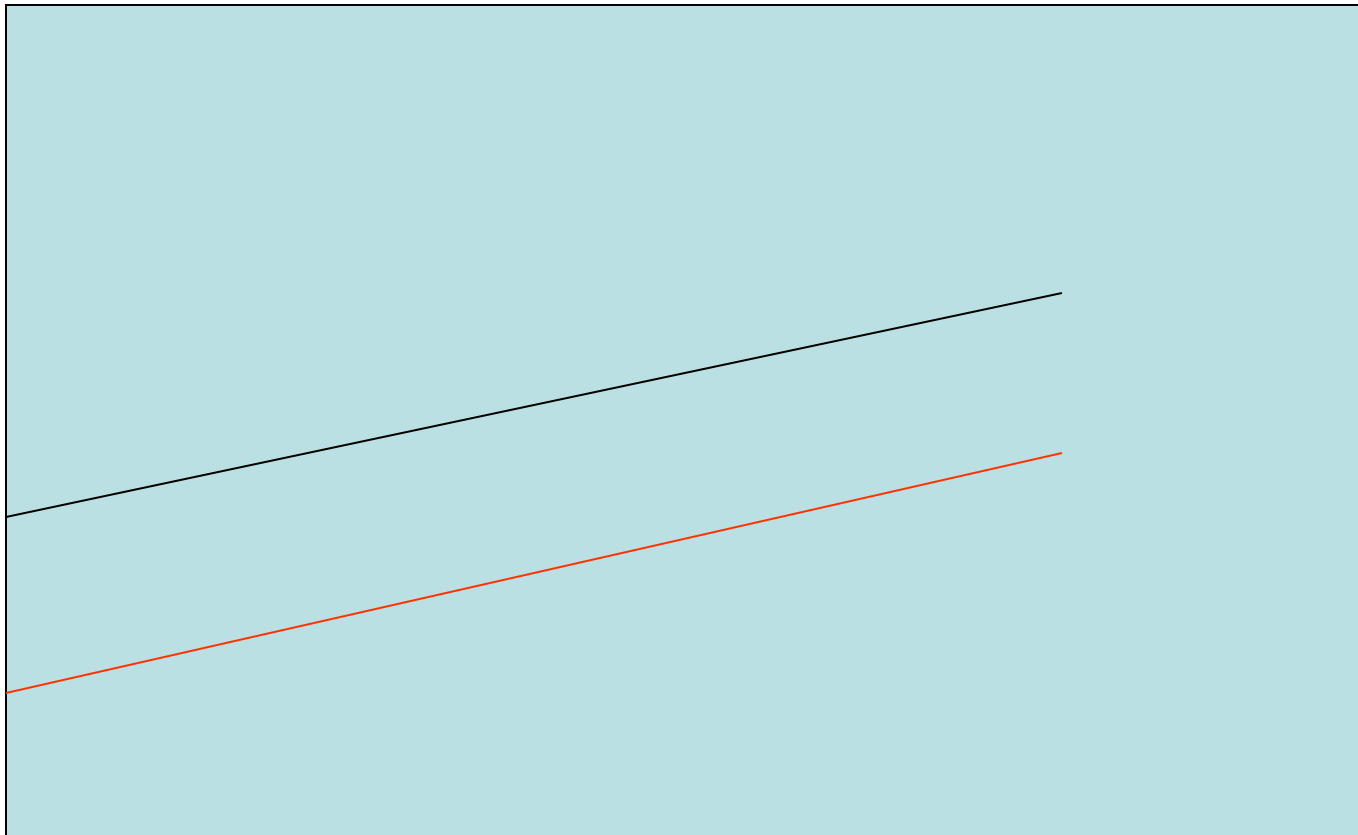
A Little More Illustration of OLR

- Use a three-category DV for illustration

	Pooled Categories		Pooled Categories
Equation 1	Low	Vs.	Moderate/High
Equation 2	Low & Moderate	Vs.	High

A Little More Illustration of OLR (cont.)

An illustration of OLR model with a three-category DV



Questions for Dependent Variables

- Aggressive parenting
 - Psychological aggression
 - Shouted, yelled, or screamed at
 - Threatened to spank or hit but didn't actually do it
 - Swore or cursed at
 - Called him/her dumb or lazy or some other name like that
 - Said you would send him/her away or would kick him/her out of the house
 - Physical assault
 - Spanked him/her on the bottom with your bare hand
 - Hit him/her on the bottom with something like a belt, a hairbrush, a stick or some other hard object
 - Slapped him/her on the hand, arm, or leg
 - Pinched him/her
 - Shook him/her

Questions for DVs (cont.)

- For each question, subjects were asked to choose one of eight responses to the question: “How many times have you done this in the past year?”
- Each response is weighted and then summed up to form a scale, which is categorized into three levels: low, moderate, & high

Frequency	0	*	1	2	3-5	6-10	11-20	>20
Weight	0	.5	1	2	4	8	15	25

* Not last year, but happened before

Questions for Independent Variable

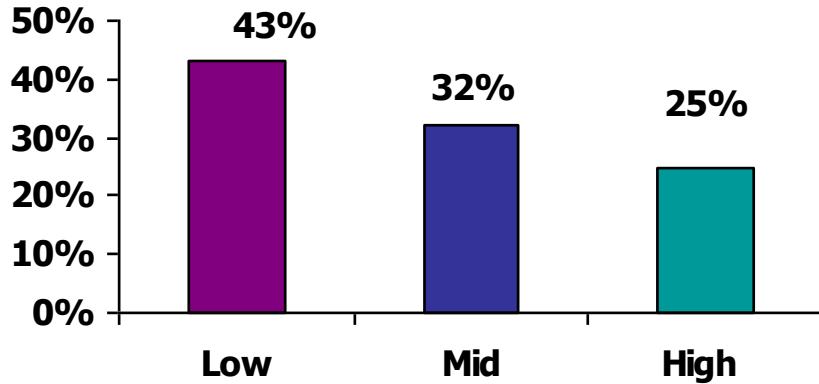
- In the past year, how many times respondents
 - Saw someone get beaten up
 - got beaten up
 - Saw someone attacked with a weapon
 - were attacked with a weapon
 - Saw someone get shot at
 - were shot at
 - Saw someone killed thru violence

Constructed DVs and IV

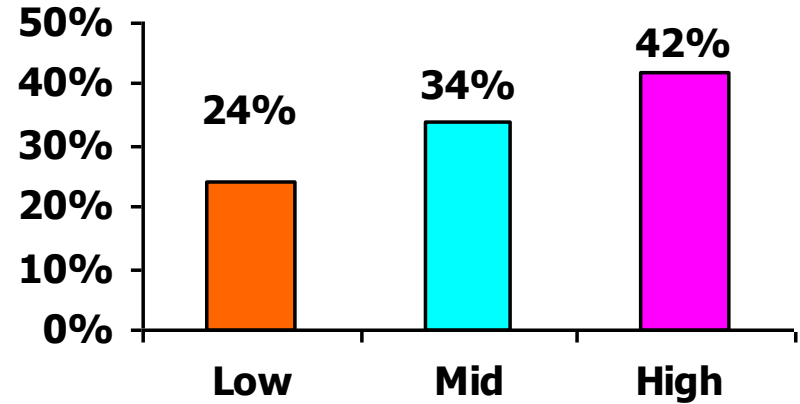
DVs/IV	Categories
Psychological aggression (Std. α =.52)	Low: 0~2 Moderate:3~5 High: 6~22
Physical assault (Std. α =.51)	Low: 0~5 Moderate:6~10 High:11~28
Violence exposure (Std. α =.70)	No: 0 Moderate: 1~2 High: 3~13

Sample Features

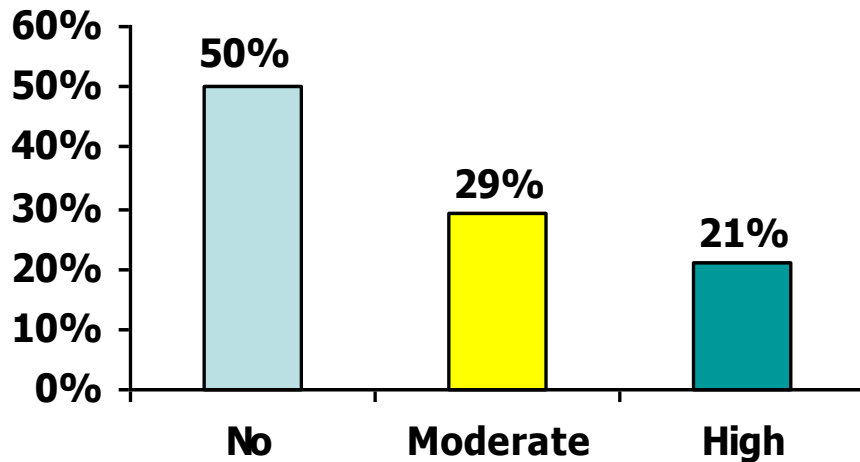
Physical Assault Style



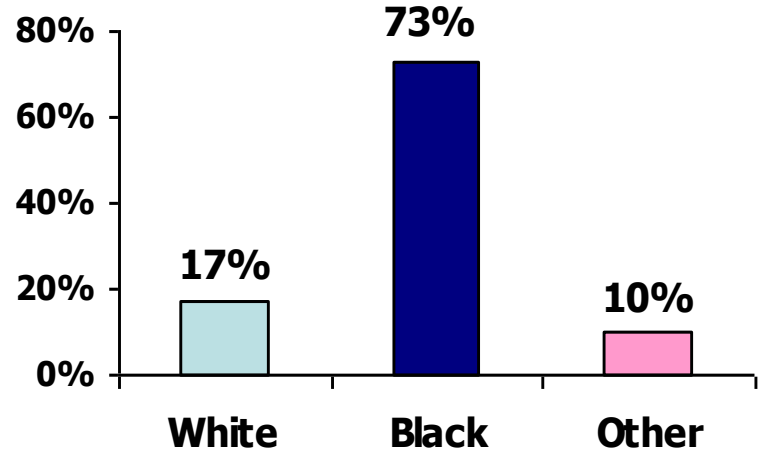
Psychological Aggression



Violence Exposure

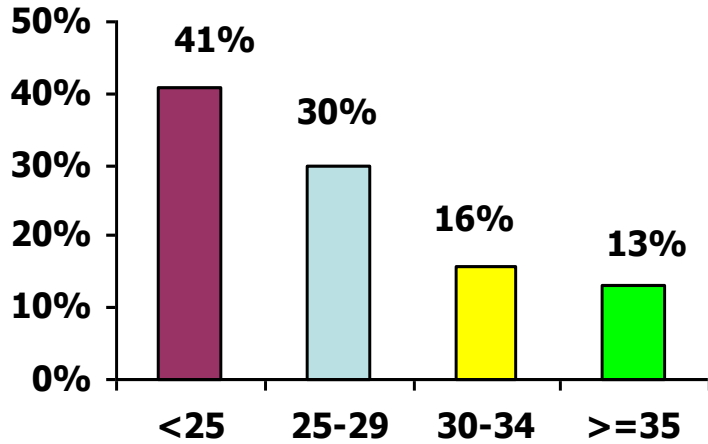


Race

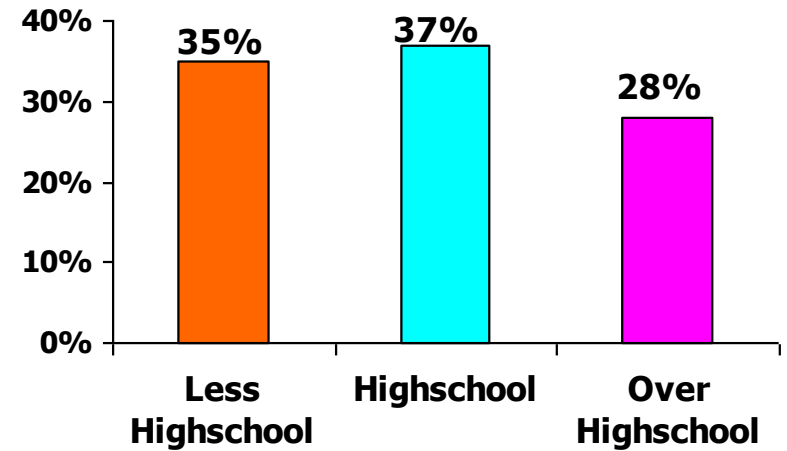


Sample Features (cont.)

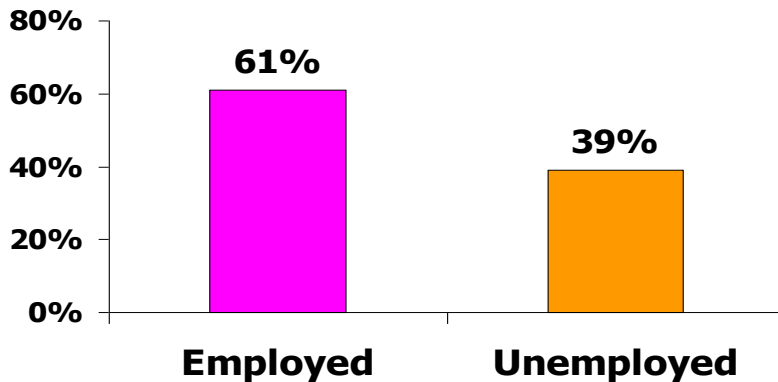
Age



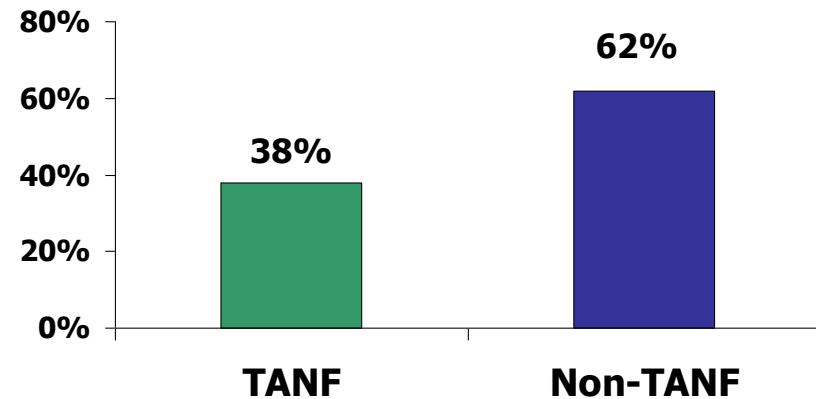
Education



Employment



TANF Recipient



Multivariate Analyses

Variable	Aggre/OD	Assault/OD
Violence expo - moderate	2.8	1.7*
Violence expo - high	4.4**	2.4***
Stress - moderate	3.1*	1.9*
Stress - high	5.3**	2.8*
African American	4.8***	2.7*
Alcohol - moderate	3.1**	1.9
Alcohol - high	6.0**	2.8
Pseudo R ²	0.19	0.19

- Other factors under control: age, education, number of kids, employment, social support, father support, public assistance recipient, mother health, housing status, etc.

Conclusions

- Negative social contexts, indicated here by intensity of exposure to violence, has significant impact on low-income single mother's employment of psychological aggression and physical assault in their parenting of preschool children
- Other factors, such as mother's stress levels, being African American, and alcohol use are also positively associated with the likelihood of adopting one or both such parenting styles

Implications

- Contextual factors such as violent environment should be examined for better understanding of low-income single mother's parenting practice
- Parenting intervention programs should develop strategies to counteract the impact of such negative social contexts
- The mechanism of parent's violence exposure on child well-being merits further investigation

Thank you!

- If you have questions or comments, please contact me at:
szhang11@illinois.edu